



SAFEGUARDING A GENERATION

2024 IMPACT REPORT

AOTEAROA NEW ZEALAND



“ I love to see the impact we have and how we are making a difference in people’s lives – it’s a real privilege to be there when students are vulnerable and they turn to us to help because they know we are a safe place. ”

Red Frogs Volunteer

WHĀINGA / VISION

Our vision is to reduce suffering and safeguard a generation of young people.

KAUPAPA / MISSION

We do this by acting as a positive peer presence in order to empower rangatahi / young people to:

- make positive life choices and;
- become a voice of change within their culture.

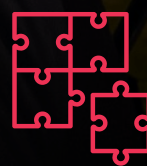
THIS LOOKS LIKE



PEER SUPPORT



EDUCATION



ALTERNATIVE ACTIVITIES

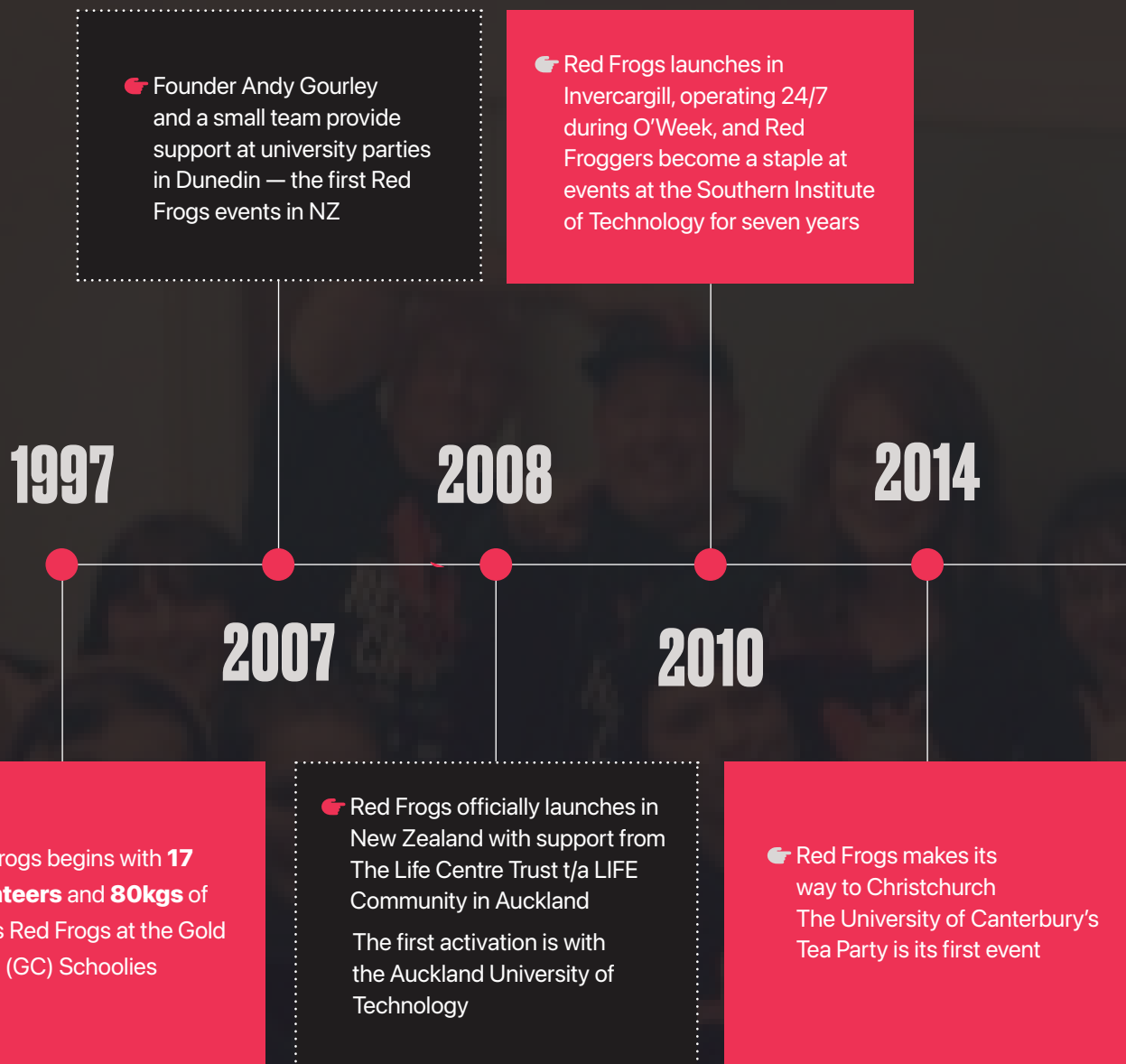


REFERRALS

WHANONGA PONO / OUR CORE VALUES

- 1. MANAAKI / SERVING**
- 2. NGĀKAU PONO / INTEGRITY**
- 3. WHAKAWHANAUNGA / RELATIONSHIPS**

OUR WHAKAPAPA / OUR STORY





- Red Frogs start in Central Otago and Palmerston North
- Auckland Safe Zone is established in collaboration with Auckland Council, ACC, Hato Hone St John, and Red Frogs
- Red Frogs supports the Cricket World Cup in Christchurch

After over a decade of safeguarding NZ, LIFE Community decides to hand back operational oversight of Red Frogs to Australia (the founding country of Red Frogs operations)

Through key volunteers, the work of Red Frogs continues on the ground across many regions and events throughout Aotearoa

- Red Frogs New Zealand Trust is established
- New Plymouth launches
- Red Frogs is a semifinalist in the Kiwibank New Zealander of the Year Mitre 10 Community of the Year category

2015

2016

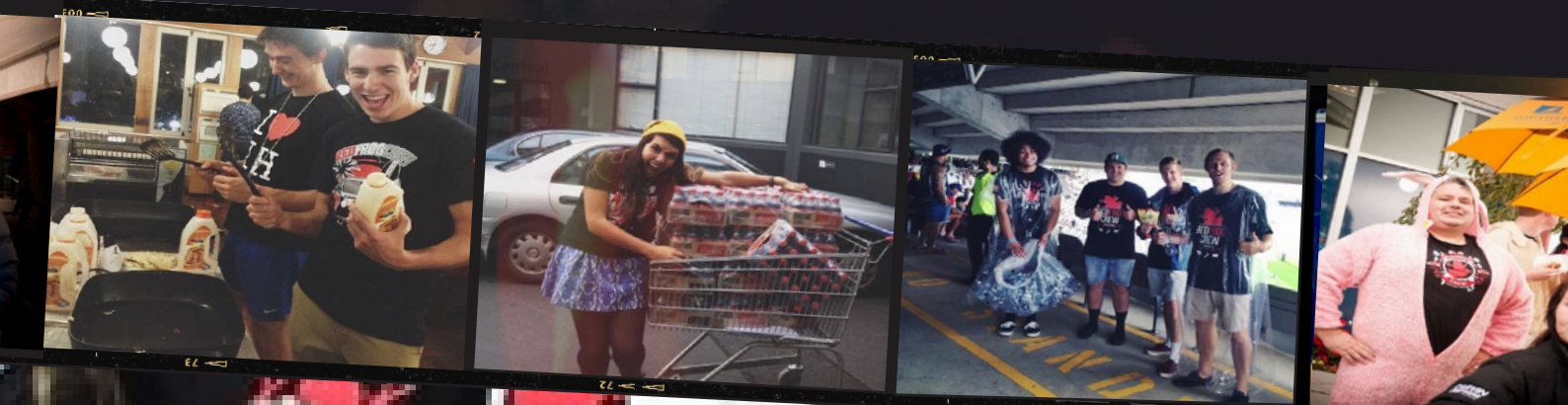
2021

2023

2024

- Queenstown WinterFest pilot with Queenstown Lakes District Council
- First multi-day New Year's responses run in Queenstown, Wanaka, Palmerston North, Mt Maunganui and Mangawhai
Over 100 volunteers take part

- Kaiteriteri and Nelson New Year's response starts with 12 volunteers
- Party Safe education programme is piloted



A NOTE FROM OUR NZ DIRECTOR

It's been an incredible year of growth for Red Frogs New Zealand. This has been our biggest year yet—expanding our team, launching new initiatives, and reestablishing key regions across Aotearoa. A major milestone was the establishment of the Red Frogs New Zealand Trust, further strengthening our foundation for the future.

We were honoured to be acknowledged in the Kiwibank New Zealander of the Year Awards as a Mitre 10 Community of the Year semi-finalist. This recognition reflects the tireless dedication of hundreds of volunteers who have given their time, care, and heart to support young people throughout the country.

Red Frogs is continuing to have a notable impact. Our kaupapa remains clear: *to safeguard a generation*. We're committed to standing alongside young people during pivotal moments of change - helping them navigate celebrations, challenges, and transitions with support and care.

I want to take the opportunity to thank and honour those that have come before – Life Community Trust who helped to pioneer Red Frogs and the numerous volunteers who, since 2007, have shown consistent manaaki for the young people of NZ.

Thanks to growing trust and relationships, we're working closer than ever with universities, schools, festival organisers, accommodation providers, and frontline services. Red Frogs is increasingly seen as a reliable, compassionate presence in wellbeing spaces for young people.

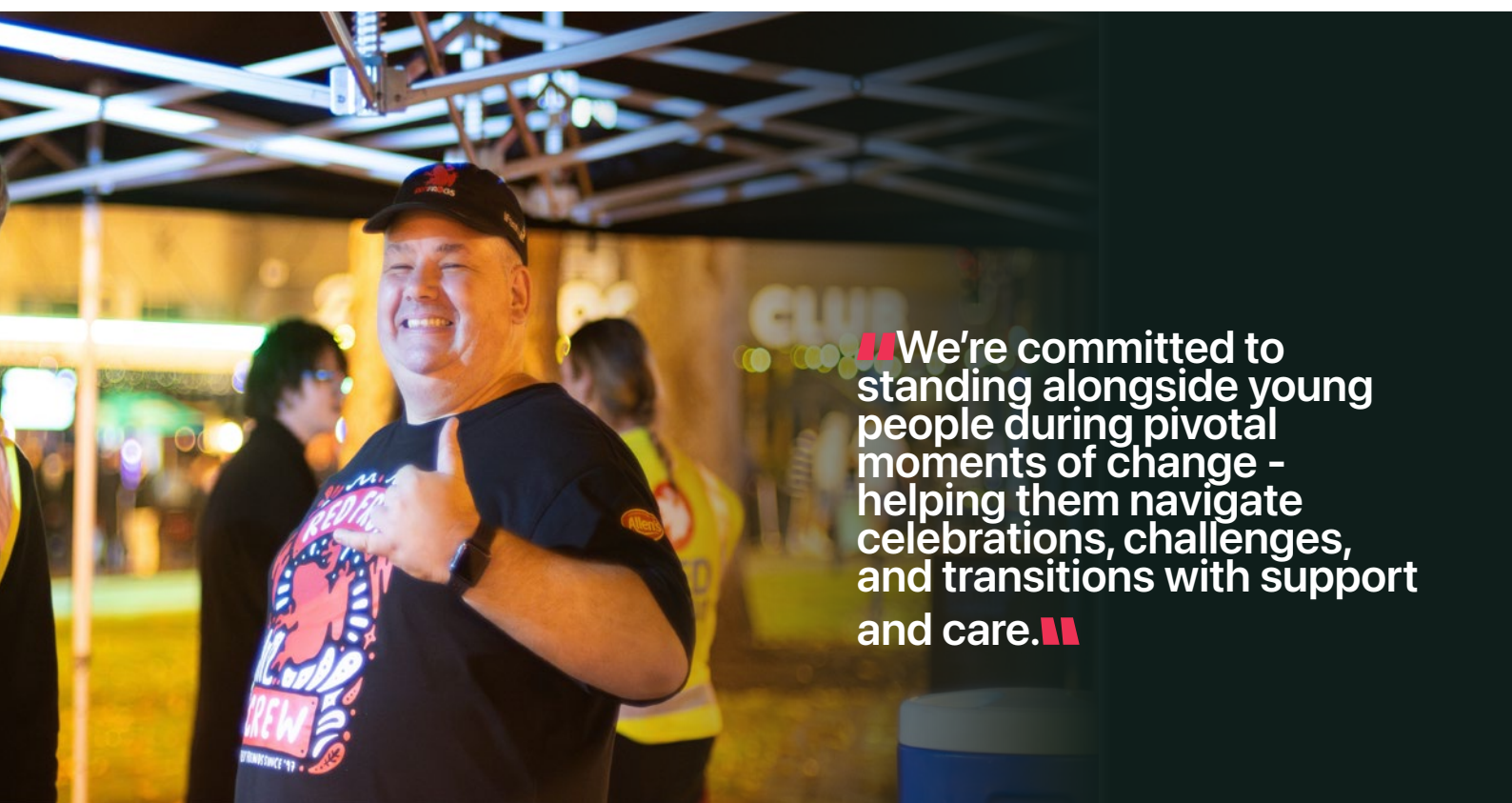
To our donors, supporters and volunteers, thank you, thank you, thank you.

Thank you to those who have answered the call, knowing that we can't always do everything, but we need to do something. Red Frogs as a movement of volunteers may not be able to solve every challenge our rangatahi face, but it remains our honour and privilege to walk alongside, being part of the support and wellbeing of young people in Aotearoa.

Ngā mihi nui,

RAY THOMSON

Director, Red Frogs New Zealand



■ We're committed to standing alongside young people during pivotal moments of change - helping them navigate celebrations, challenges, and transitions with support and care. ■

A NOTE FROM OUR FOUNDER

As we reflect on another remarkable year at Red Frogs, we're reminded that every small act creates a ripple of change. Each week, across universities, schools, festivals, concerts, sports arenas, skateparks and party precincts, our incredible volunteers show up with a powerful mission: to be a positive peer presence. Whether it's handing out water and pancakes or walking someone home, we're there when it matters most, offering support to young people as they navigate life.

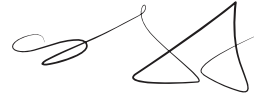
Red Frogs has seen tremendous growth this past year. What began 18 years ago as a small extension is now a thriving part of the global Red Frogs family, with more volunteers stepping up and programmes expanding across campuses and festivals. To our Kiwi Froggers, your passion is truly making a difference.

This growth is not in isolation but deeply connected to the wider Red Frogs network, which offers ongoing support and shared experience across borders. That unity is at the heart of our effectiveness.

We're not just offering snacks, we're building trust, creating safe spaces, and showing up for the one: the one who feels lost, alone, or unsure. Time and again, we've seen how presence and kindness can change a life.

Measuring our impact helps ensure we're making a real difference. The challenges young people face are significant, and we're privileged to walk alongside them. I return to the question I first asked in 1997: "What's the one thing I can do?" Thank you to every volunteer, donor, and supporter who's asked the same. Together, we are safeguarding a generation.

ANDY GOURLEY



Founder & CO, Red Frogs

“We're building trust, creating safe spaces, and showing up for the one: the one who feels lost, alone, or unsure.”



TATAURANGA/ EXECUTIVE SUMMARY

10

LOCATIONS

KEY FINDINGS

- RED FROGS ARE TRUSTED BY EVENT ATTENDEES
- RED FROGS HAVE A POSITIVE IMPACT ON BOTH PERCEPTIONS OF SAFETY AND SAFETY OUTCOMES AT EVENTS
- RED FROGS HAVE A POSITIVE IMPACT ON THE BEHAVIOUR OF YOUNG PEOPLE AT EVENTSEVENTS



744,000+ PEOPLE ASSISTED
ACROSS ALL PROGRAMMES



NZ\$292K WORTH OF
VOLUNTEER HOURS



551,200 FESTIVAL/
CONCERT ATTENDEES
SUPPORTED



50,000+ TERTIARY
STUDENTS SUPPORTED



145,840 CUPS OF
WATER HANDED OUT



43,000+ PANCAKES
COOKED



185 UNI/POLYTECH
EVENTS SUPPORTED



27 FESTIVAL/CONCERTS
SUPPORTED



350 VOLUNTEERS

RED FROGS THEORY OF CHANGE

The Red Frogs Theory of Change outlines how the organisation affects those who interact with its activities and programmes.

IMPACT	Red Frogs will safeguard a generation by 🦑	
OUTCOMES	<ul style="list-style-type: none">• Increasing the safety and wellbeing of rangatahi / young people in social settings;• Enhancing the awareness and knowledge of responsible behaviours;• Fostering the development of skills and capabilities in young people to make positive life choices; and,• Empowering rangatahi to become a voice of change within their culture.	
MEASURED BY	<ul style="list-style-type: none">• Increase in perceived (or actual) safety at events;• Increase in wellbeing and social connection;• Increase in awareness of responsible behaviours and personal safety; and,• Increase in capability to make positive life choices in social settings.	
OUTPUTS	We do this by 🦑	
	<ul style="list-style-type: none">• Mobilising volunteers who offer a positive peer support presence;• Delivering training and education in both universities and high schools;• Running alternative or preventative activities, such as coffee crawls, pancakes, hydration stations, or dinners; and,• Offering referral pathways to other services and support.	
ACTIVITIES	This can look like 🦑	
	<ul style="list-style-type: none">• High school and university education programmes on safe partying culture;• Direct relief, harm minimisation and support at major events, such as New Years and O-Week• Regular social activities at university residences;• Providing early intervention and patron welfare support at music festivals and large sporting events.	
INPUTS	Impact is scaled through our 🦑	
	<ul style="list-style-type: none">• Staff and volunteers;• Financial resources;• Training and capacity building; and,• Sponsors and Programme partners.	

RIGHT PLACE, RIGHT TIME

OUTCOME MEASURED: INCREASE IN PERCEIVED (OR ACTUAL) SAFETY AT EVENTS

Red Frogs volunteers are the calm amongst the chaos, often finding themselves in the right place at the right time.

A safe and trusted presence in alcohol-fuelled environments, volunteers provide essential assistance, care and comfort to vulnerable individuals impacted by the effects of drug or alcohol intoxication.

For many rangatahi, encountering a Red Frogger means being seen, protected and treated with dignity. Most importantly, they know they will not be judged if they reach out to a Red Frogger for help.

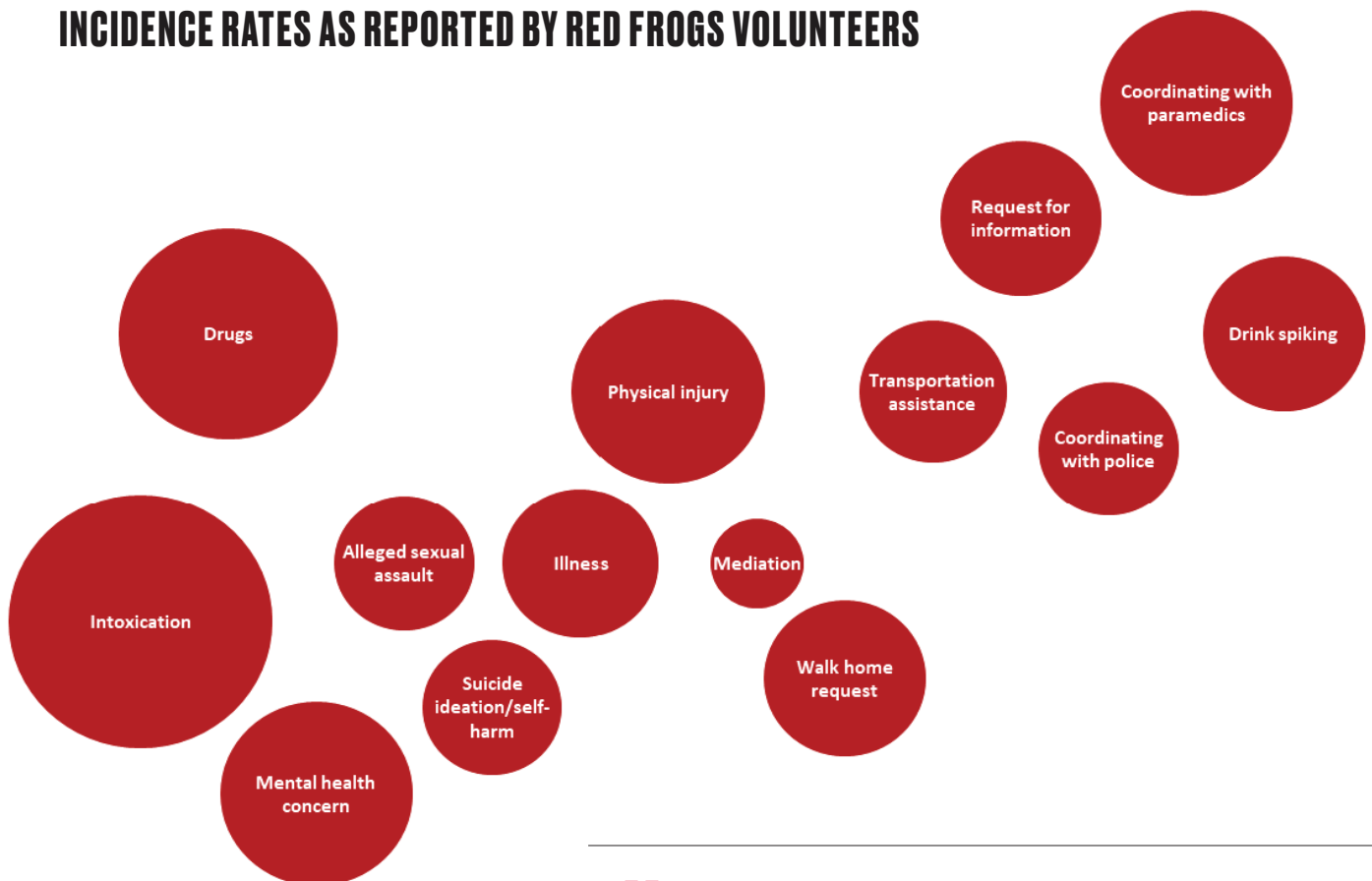


Direct relief, harm minimisation and support at major events, such as New Years and O-Week.



Providing early intervention and patron welfare support at music festivals and large sporting events.

INCIDENCE RATES AS REPORTED BY RED FROGS VOLUNTEERS



“It’s a real privilege to be there when students are vulnerable and they turn to us to help because they know we are a safe place.”

- Red Frogs Volunteer

CASE STUDIES

STORY ONE

RIGHT PLACE, RIGHT TIME

"I was sitting with a guy in the chill-out zone - he wasn't able to speak very clearly and was mumbling a lot. So I was just trying to hang out with him and figure out what was going on.

I noticed he was getting a ton of notifications on his phone, and I saw that he had a bag with him. I was able to connect the dots that he was a diabetic, and all the notifications that were coming up were saying "urgent—low sugar levels."

I gave him some cookies to get some sugar into his body quickly, and then was able to take him to the medics to get the care that he urgently needed.

I'm so glad I was able to pick up on that—he just wasn't able to say "I need help" or "get me to the medic" or anything like that, so it was really cool to be able to get him help."

Sophie, Red Frogs Festival Volunteer

“Just the presence of the friendly Red Frogs team reminds young people to look out for their friends and take care of themselves.”

- Survey Respondent

STORY TWO

GENERATIONAL IMPACT

"I used to be one of the people who needed help, and Red Frogs did an amazing job supporting me. Now I get to give back and help other people who need it.

It's an amazing thing to give back... You get that feeling in you that you have achieved something — you've got this person home safe, you're sobering them up, giving them food and making sure they are happy, they get home safe,

and they enjoy their night and the event they are at.

Red Frogs is now a big part of my life - I've got amazing friends, and I've got a good team behind me. Red Frogs is a great thing to get into if you really want to help people. Helping people is one of the best things you can do."

Ryan, Red Frogs Volunteer

WHAKAWHANAUNGATANGA / CATALYSING CONNECTIONS

OUTCOME MEASURED: INCREASE IN WELLBEING AND SOCIAL CONNECTION

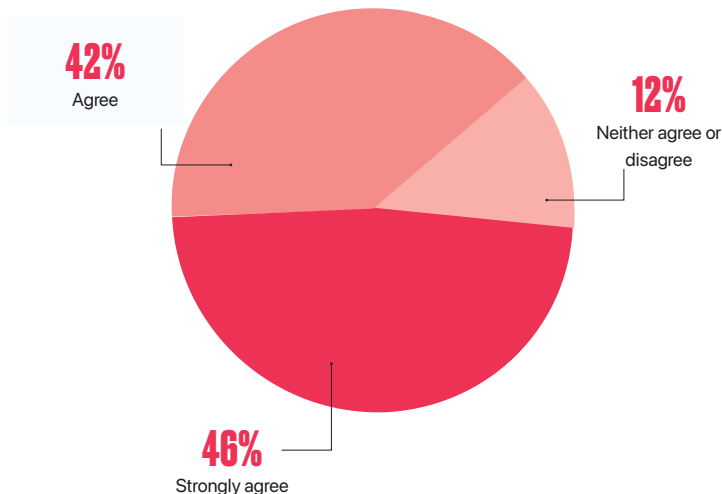
In 2024, Red Frogs volunteers supported more than 50,000 tertiary students across 185 events throughout New Zealand. Testimonials from tertiary leaders and staff indicate that the presence of Red Frogs on campus and in halls has a positive impact on culture and student wellbeing, as well as significantly reducing harm at events.

Red Frogs provides more than just party support. Red Frogs'

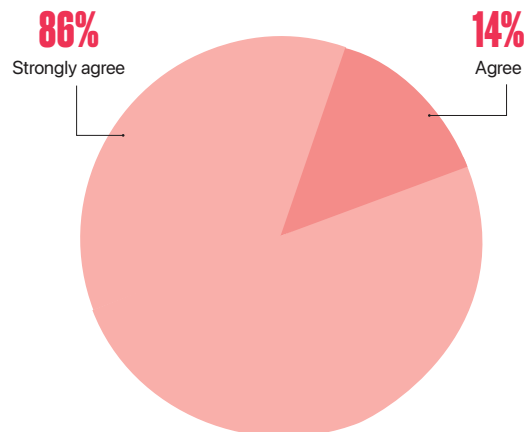
education programme, 'Freshers Orientation'— presented to over 2,300 students, including both first years and student leaders in 2024 — is designed to equip and empower students to make positive choices, regardless of their stage of study.

Fortnightly pancake cook-ups in halls of residence provide a regular connection point, combating isolation and loneliness, and fostering community for students living away from home.

RED FROG EVENTS HELP ME FEEL MORE INCLUDED IN STUDENT LIFE



RED FROGS HAS A POSITIVE IMPACT ON THE WELL-BEING OF YOUNG PEOPLE



96 per cent of University and Polytech student respondents state that they are likely or very likely to approach a Red Frogs volunteer if they require assistance at an event

67 per cent of University and Polytech student respondents had been assisted at an event by Red Frogs volunteers.

“Red Frogs’ relatability and authentic connection helped set the tone for a successful and supportive start to our students’ university life, laying the foundation for key messages around wellbeing, consent, safety, and community.”

University of Auckland

CASE STUDIES

STORY ONE

ST PATRICK'S DAY

"On St Paddy's Day, we had a group of three patrons from Auckland come past the safe zone. One of them was quite drunk, and their friends were trying to do what they could to help them. They were down the other end of the street when they saw the Red Frogs tent in the distance, and, having met the Red Frogs in Auckland Halls of Residence, knew that if they came and saw us, we were going to be there and that we were happy to help in looking after their mate.

They were so happy to know that we were in other cities to help look after the students, no matter what state they showed up in."

- Red Frogs Volunteer, Dunedin

■ ■ *"Getting pancakes from Red Frogs is the highlight of my night during O-Week events."* **■ ■**

- University Student, Survey Response

STORY TWO

O'WEEK, FLO' WEEK AND RE-O'WEEK

"We were set up on Castle St during Orientation week and had a female student fall over onto the road next to our safe zone. She was unresponsive and bleeding. Another volunteer and I quickly went to help — we called the ambulance, and police assisted us in getting her off the road safely.

She soon started to respond and stated she was fine; however, with the help of police, we convinced her she needed to be checked out — she had some pretty substantial facial injuries and was suffering memory loss.

While we waited, we helped to clean her up and calm down her friends, who were pretty upset.

The police heard that the ambulance was going to be a while, so we called Campus Watch to take her to the Emergency Department for treatment.

I'm so thankful we were right there to help her and her friends in those moments because who knows what could have happened to her otherwise."

- Shannon, Red Frogs Staff Member

BUILDING BETTER CHOICES

OUTCOME MEASURED: INCREASE IN CAPABILITY TO MAKE POSITIVE LIFE CHOICES IN SOCIAL SETTINGS

*Nāu te rourou, nāku te rourou, ka ora ai te iwi -
With your food basket and my food basket, the people will thrive.*

Strong partnerships are a key part of enabling Red Frogs to make a meaningful impact. Whether it be large-scale New Year's Eve events, music festivals, sporting events or fortnightly pancake cook-ups on university campuses, collaboration has been at the heart.

By working closely with event organisers, educational institutions, emergency services, local councils and other community stakeholders, Red Frogs is able to provide consistent, proactive support to young people.

This collective approach has proven successful in creating safe spaces and fostering positive experiences, not only for young people but also for those working to safeguard them.

83% OF ORGANISATIONS THAT RESPONDED OBSERVED THAT RED FROGS HAS A POSITIVE IMPACT ON THE DECISION-MAKING / BEHAVIOUR OF YOUNG PEOPLE AT EVENTS

83%



"When the Red Frogs are operating, our workload is considerably reduced, and it allows us to concentrate on the genuinely sick individuals who need a higher level of care. Our ambulance staff are unable to operate proactively to prevent intoxication levels from becoming an issue; however, the service provided by the Red Frogs significantly reduces the incidence of severe intoxication levels."

Doug Third, Hato Hone St John, Area Operations Manager - Coastal Otago

"Event organisers who have Red Frogs staff support/presence add a layer of host responsibility to the event and an assurance that there is another set of 'eyes' and 'care' over event goers. This is particularly important from a licensing perspective."

Event Organiser, Survey Response

“Red Frogs is an important layer in the overall safety of persons at an event. They help out in many ways and show that there is general care over and above medics and nurses. They also assist in taking off the pressure in those areas in less critical situations.”

- Event Organiser, Survey Response

PARTNER PERSPECTIVES

PERSPECTIVE ONE

DAVE SCOTT - UNIVERSITY OF OTAGO PROCTOR

"The collaboration between Red Frogs and the University of Otago is having a positive impact on student safety and wellbeing, especially during high-risk events.

When it comes to prevention work, a real challenge is being able to measure its values and success; however, Red Frogs' work (along with other community partners) can be measured by the absence of harm at events where it has traditionally been an issue, which is a powerful indicator of their effectiveness. By providing a safe space, offering essential services like food and water, and having trained guardians on hand, Red Frogs is making a real difference in creating safer environments for students.

Red Frogs continue to influence student culture in a positive way; their professionalism, motivation, and practical approach to prevention are key elements of their success. This collaborative effort not only protects students but also fosters a culture of responsibility and care in a high-risk setting."

PERSPECTIVE TWO

DAVID BAILLIE, HATO HONE ST JOHN AREA OPERATIONS MANAGER CENTRAL OTAGO

"Our larger festivals see a significant number of patients with alcohol and drug-related issues, and the assistance of the Red Frogs team is not only exemplary but essential, enabling us to do our job and provide medical care for those who need it the most.

I continue to be impressed with their compassion, professionalism and commitment to the welfare of vulnerable people, and it is my opinion

they provide a vital service through hydration stations, chaplaincy, and safe-spaces. They offer a reassuring presence and safety net for individuals who don't require medical attention but are too cognitively altered to be left alone.

I wholeheartedly support the mission and vision of Red Frogs and encourage others to recognise their important contribution to our communities."

A SAFER NEW YEARS

In the lead up to New Year's, thousands of teenagers and young adults flock to popular holiday locations, particularly Wanaka, with large crowds converging along the waterfront. These are not organised events, but organic gatherings.

Red Frogs has been a consistent presence in Queenstown and Wanaka during the New Year holiday period since 2016, providing a safe and positive environment for party-goers.

The New Year's response is a collaborative partnership between Red Frogs, the Queenstown Lakes District Council, police, and emergency services, and has become a core part of efforts to ensure patrons are safe during this high-risk period.

Across three nights, Red Frogs provide alcohol and drug-free zones, or 'chill out zones', for young people. Those wanting an escape from the festivities can use these spaces at their

disposal — grab a pancake, water and some conversation. If they — or their friends — are impacted by alcohol or drug intoxication, they can be checked out by onsite medics and cared for by Red Frogs volunteers.

Meanwhile, Red Frogs' roving teams are out on the street acting as eyes and ears, offering water, advice and assistance to patrons in need.

The presence of Red Frogs has made a tangible difference to the safety of young people at New Year's — since its inception, volunteers have directly cared for more than 1,200 people.

In 2023, Red Frogs' New Year's response expanded to Kaiteriteri and Nelson, and there have been requests for similar responses in other areas.

2024 NEW YEARS STATS



21,000+

interactions



132

active cares
(people actively
cared for)



13,000+

cups of water



5000+

pancakes

83 per cent of New Year's Eve survey respondents felt that a Red Frogs school/parent education session would help them to feel better informed and prepared to keep safe at New Year's.

“I was touched by the kindness Red Frogs showed to all these kids and young people, kneeling down next to them, holding up their heads... I couldn't help but stand there for a moment just to watch this act of kindness.”

Event Attendee, New Year's, Wanaka

IN THE SAFE ZONE

A young female was brought to the Safe Zone by her friends after drinking straight spirits. The friends left quickly, leaving no contact details behind. She was deteriorating rapidly, so onsite medics assessed and decided to call 111. The patron had no phone or ability to communicate who she was, so we shoulder-tapped the Police who came by the tent, and they searched her for her ID to get details.

The patron became more responsive when St John arrived. They assessed her and left her in the care of Red Frogs and medics as she was improving (responsive, able to raise her head/open eyes).

She slept in the medic tent whilst Red Frogs kept her company, waking her every 5 minutes. Eventually the medics pulled the Police in to try and contact her parents, however, they were uninterested in her condition and restated that she was staying at the campground, though they did not specify which one.

Police were able to organise for her boyfriend to pick her up and take her home to look after her.

- New Years Safe Zone Logs

“Knowing Red Frogs were around was an added layer of assurance for me, that if something went wrong, there were people who would look out for my child and their friends and keep them safe.”

- New Years Survey Respondent

PARTNER PERSPECTIVE

INSPECTOR PAULA ENOKA, NZ POLICE AREA COMMANDER - OTAGO LAKES CENTRAL

Red Frogs are of great benefit to interagency partnerships with QLDC, the Police, and Hato Hone St John. They provide a conduit between any emergency service uniform presence.

They are integral in the planning that goes into the event. The NYE event could not have the positive benefits without the assistance of Red Frogs. Their proactive messaging prior to the event and what they do during the event reduces harm at the events.

NZ Police truly values the services, engagement and empathy Red Frogs offers. It is a crucial part of the interagency event.

NZ Police places a high value on the partnership as we combine our efforts to achieve the outcomes that we all want, a safe and happy NYE.

KA MUA, KA MURI / LOOKING FORWARD

WALKING BACKWARDS INTO THE FUTURE - WHERE TO NEXT

2024 was a major year of growth for Red Frogs in New Zealand — expanding its reach with more volunteers, new locations, a stronger presence on campus and in halls of residence, and a greater involvement in festivals and events. However, this pace of growth is not sustainable without careful planning and support.

Looking ahead, we have identified two key areas crucial to ensuring that Red Frogs continues to have a positive impact on the young people of Aotearoa: developing and expanding our education programmes, and ensuring the long-term financial sustainability of the organisation.

EDUCATION PROGRAMMES

During the past few years, Red Frogs has earned recognition as a key partner in the tertiary education sector, providing essential training for first-year students and equipping student leaders to support their peers and foster safer social environments.

Continuing the mission to protect and support young people, Red Frogs is expanding its initiatives with a series of programmes for high school students, aimed at equipping and empowering them to make positive life choices. Among these is a New Year's-focused safety programme, designed for rangatahi travelling to popular holiday destinations to celebrate. This will include a dedicated programme for parents, reinforcing the message that safeguarding the next generation is a collective responsibility.

“There are very young children at New Year's Eve drinking. I strongly believe that education for adults is important here focusing on how parents need to support these kids.”

Survey respondent

“Without Red Frogs, we would have a substantial gap in the training for our RAs (Residential Assistants) and their knowledge that they provide to our first-year students.”

Lincoln University

80 per cent of University and Polytech student respondents who had attended a Red Frogs education session report implementing recommended practices at an event they have attended.

FINANCIAL SUSTAINABILITY

Without a solid foundation of financial support, the ability to continue delivering high-quality care, peer support, and harm reduction services will be challenged. Financial sustainability ensures Red Frogs can keep showing up for young people and safeguarding the next generation.

To ensure long-term impact, Red Frogs is focusing on building a sustainable financial model. This includes diversifying income streams through strategic partnerships, government and community grants, donor engagement, and corporate sponsorships.

Investing in infrastructure, volunteer training, and programme development is essential for sustaining current operations and for responding to the growing demand for support across sectors.



An overwhelming majority of University and Polytech student respondents who had attended a Red Frogs education session felt more informed about safe practices as a result of the session

KAITAUTOKO / OUR DONORS/SPONSORS

Thanks to the incredible generosity of our volunteers, partners and donors, we reached more than 744,000 people in 2024, bringing us closer to our vision of safeguarding a generation.

To our supporters, thank you. Your generosity makes this work possible. We may not be able to solve every challenge our rangatahi face, but we can walk alongside them.

And together, we're making a difference.

With 17 years of frontline experience addressing alcohol-related harm in Aotearoa, a newly established charitable trust and committed core team, Red Frogs has a strong foundation as it looks towards the next steps.

To ensure Red Frogs can support more young people and amplify its impact, we are undertaking the following strategic actions:

- Hiring additional staff to strengthen our capacity for education programmes and enhance our volunteer recruitment and training efforts.
- Expanding our volunteer base to strengthen Red Frogs' presence throughout Aotearoa.
- Increasing the visibility of Red Frogs' work and impact — gaining more exposure to show people the value of supporting our work with young people and encouraging greater community involvement.

Your support helps us reduce suffering and walk alongside young people as they become voices of change.

Here's how you can partner with us:

MAKE A KOHA / DONATION

TO MAKE A ONE-OFF DONATION VISIT OUR WEBSITE BELOW OR SCAN THE QR CODE

W: redfrogs.co.nz/support/donate



SCAN THE QR
CODE TO DONATE

FRIENDS OF THE FROG

TO SIGN UP FOR REGULAR GIVING

W: redfrogs.co.nz/support/friends-of-the-frog

CORPORATE PARTNERSHIPS

TO FIND OUT HOW YOUR BUSINESS OR ORGANISATION CAN PARTNER WITH RED FROGS

W: redfrogs.co.nz/support

P: 021 284 6149

E: info@redfrogs.co.nz

IMPACT METHODOLOGY

WHY WE MEASURE

To “safeguard a generation,” concerted efforts are required across multiple sectors, combining resources, knowledge, and expertise.

At Red Frogs, we understand that tracking and assessing our effectiveness is crucial to validating our programmes and activities, optimising resources, staying accountable to our partners, and scaling our impact responsibly.

APPROACH AND LIMITATIONS

This is the first year Red Frogs has embarked on an impact measurement and evaluation approach anchored in the Theory of Change (ToC) framework. The ToC traces initial inputs through to long-term societal impacts.

The 2024 Impact Report focuses on Aotearoa New Zealand.

We’ve developed a logic framework using a mixed-methods approach that combines quantitative data and qualitative insights. Through surveys and direct feedback, we have gathered evidence of the improvements in safety, wellbeing, and behaviour among rangatahi / young people. Personal stories and case studies highlight the human experience, offering insights into the transformative effects of our efforts.

Red Frogs recognises that external variables can influence and contribute to the impact it seeks to achieve. Where estimates have been made, we have taken a conservative approach. Conversely, because the ToC uses predefined outcomes, we can miss other areas of impact that we are not seeking to measure for this report.

THE 2024 DATA SUMMARY

Data collection and analysis have actively involved the cross-section of Red Frog’s stakeholders, including (but not limited to) volunteers and staff, event participants, community leaders, and partner organisations.

Aggregated event/programme reporting.

Aggregated regional reporting to a National level.

89 unique survey responses from from volunteers, high school, university and polytechnic students, partner organisations and event attendees.

NB: Data is not statistically significant, with a 13% margin of error at a 90% confidence level.

Analysis of the existing collection of stories, testimonials, and media mentions from 2024.

Surveys were conducted anonymously. Where survey responses are quoted in the report, minor adjustments have been made to the phrasing to remove potentially identifying information or linguistic styles.

CONTACT US

E: info@redfrogs.co.nz

IG: [@redfrogsnz](https://www.instagram.com/redfrogsnz)

P: 021 284 6149

W: [redfrogs.co.nz](https://www.redfrogs.co.nz)

MEDIA ENQUIRIES

media@redfrogs.co.nz

Prepared by Pluri

W: [pluri.com.au](https://www.pluri.com.au)

© August 2025, Red Frogs. All rights reserved.

SCAN THE QR CODE
TO VISIT OUR WEBSITE



ACKNOWLEDGEMENTS

Red Frogs is grateful for the input provided by its volunteers, staff, partners, and donors in the preparation of this 2024 Impact Report. A special thank you to those who have been willing to share their stories of how Red Frogs has made a difference in their lives and the lives of their loved ones.

